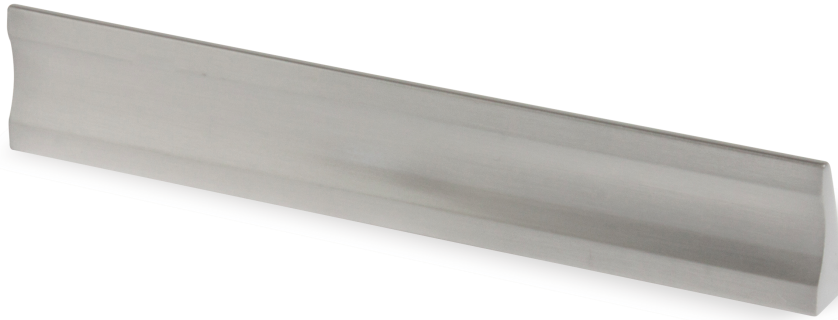
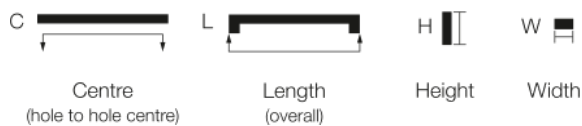


Technical Data Sheet

Tekform Handles by Titus



DIMENSIONS & TECHNICAL DRAWINGS



HANDLE FINISHES

Note: Finish colours are indicative only. Actual handle finish colour may vary.

PB		Polished Brass
PC		Polished Chrome
SC		Satin Chrome
MN		Matt Nickel

SS		Stainless Steel
AA		Anodised Aluminium
BN		Brushed Nickel
BLN		Black Nickel
MB		Matt Black

Pull Handle

DETAILS & ORDERING INFORMATION

Series: 7106
Material: Zinc
Finish: Brushed Nickel

INSTALLATION

Use handle screws located on page 15 of the Tekform Handles by Titus 2015 Product Brochure.

See reverse for additional ordering information & contact details.

Item Number	C (mm)	L (mm)	H (mm)	W (mm)	Box Quantity
36.016.200	96	110	25	12	50/500
36.016.202	128	142	25	12	25/250
36.016.204	160	174	25	12	25/250
36.016.206	256	270	25	12	25/100
36.016.208	320	334	25	12	25/100

Contact Details

Sydney

(02) 9826 0007

Brisbane

(07) 2366 3999

Melbourne

(03) 9737 5566

Adelaide

(08) 8447 3700

Hobart

(03) 6273 1199

TITUS GROUP

TITUS TEKFORM PTY LTD

EMAIL

info@titustekform.com.au

WEB

www.titustekform.com.au